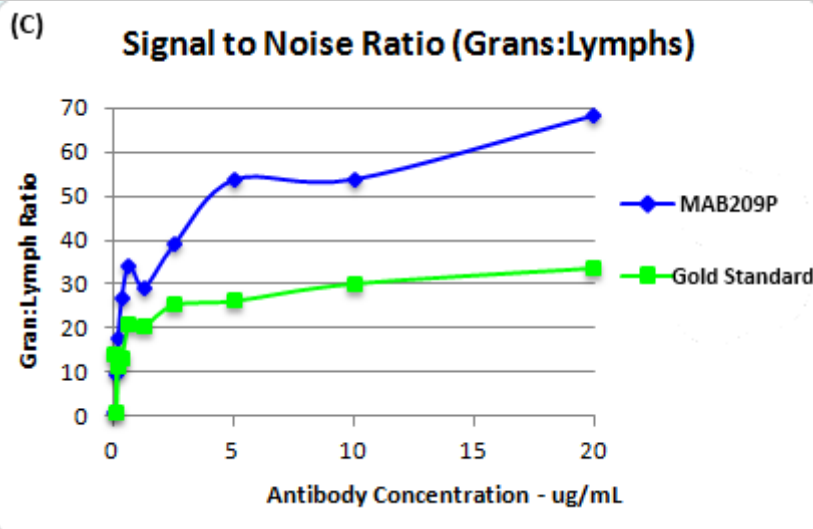
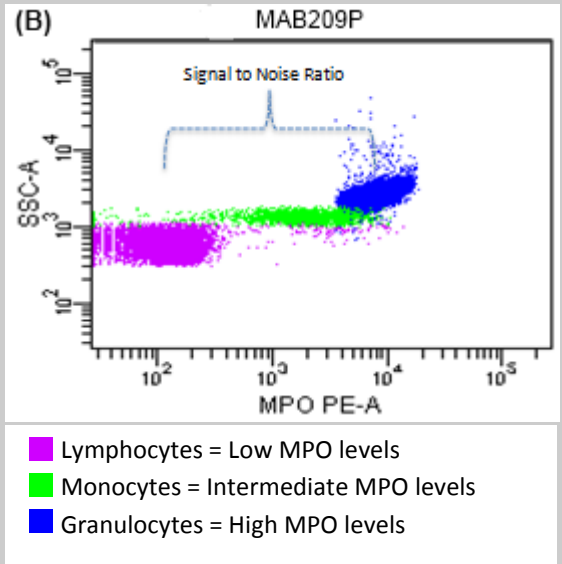
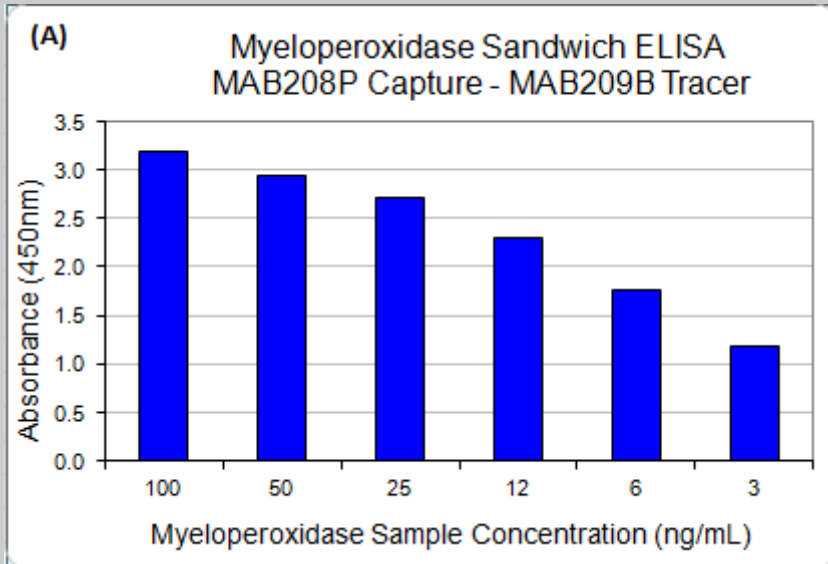


Monoclonal Antibodies to Myeloperoxidase

- Developed by MBS R&D - MAB208P and MAB209P
- Recognize native human myeloperoxidase
- Antibodies work as a matched pair in a sandwich ELISA
- Do not cross-react with human lactoferrin or bovine lactoperoxidase
- Outperform current gold standard in flow cytometry applications



(Figure A) ELISA using MAB208P as the capture antibody and MAB209P conjugated to biotin as the tracer antibody. This pair is able to detect MPO at <3 ng/ml

(Figures B and C) Based on the cellular preparation protocol used for this assay, MAB209P is superior to the gold standard in terms of signal to noise ratio when analyzed by flow cytometry. The exceptional signal to noise ratio demonstrates the high specificity and affinity of MAB209P.